



chapmanbdsp

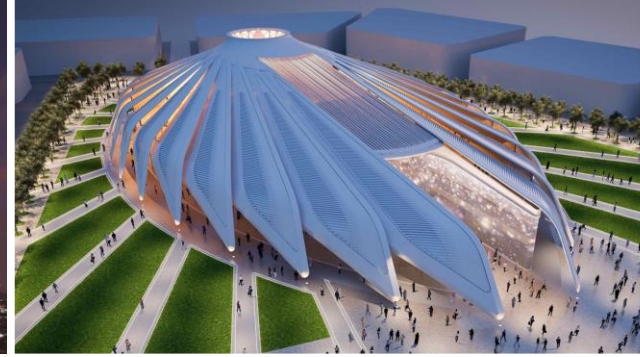
chapmanbdsp

Early Careers 2024

A decorative graphic consisting of two overlapping circles. The left circle is white with a thin outline, and the right circle is a solid dark blue. A series of thin, white, wavy lines flow from the bottom of the left circle towards the right circle, creating a sense of movement and connection.

Contents

1. Welcome
2. Who we are
3. Investing in your future
4. Opportunities with us
5. Proud of our projects
6. Awards and recognition



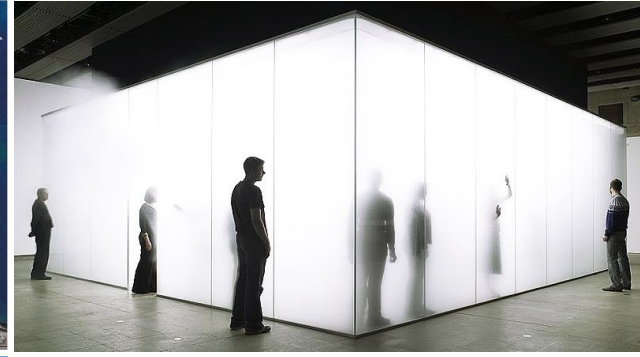
Welcome

“Our success has been built on the efforts of our talented people. We value our staff and want to encourage them to achieve their ambitions. We are always looking for new people to join our diverse and talented teams and are keen to encourage people into the industry.

We will help and support you in developing your career, ensuring that you have the training and resources that you need to build your knowledge base. You will also be assigned a mentor from within the business to assist you with this and maximize your future potential.

As a company, operating in a highly competitive skills-driven market, we are always looking to attract and encourage new talent into our business and broaden the reach of our industry.”

Kathryn Cox HR Director
kathryn.cox@chapmanbdsp.com



Who we are

“We are innovators who challenge technical constraints and conventional engineering design.”

We are an owner led business specialising in all aspects of building services and environmental consultancy. We are proud to have delivered world-class projects in more than 30 countries across the globe.

For over 50 years, we have worked with clients across a wide range of markets, from large mixed-use developments, through to one-off private residences. We provide truly integrated service delivery through our in-house specialists that span the life-cycle of each project.

The mix of engineers, designers, architects, programmers, analysts and Researchers that represent our core staff, enables us to take on a variety of technically challenging projects and explore solutions from a multi-layered perspective.

Management Structure

All Board Directors have invested in the business and are committed to our culture and brand. This will be at the centre of everything we do.

The Delivery Board are empowered to run the project delivery and day to day activities in the company. They are responsible for resource, quality and project commercial activities referring to the Management Board for strategic decisions.

The Management Board are empowered to make day-to-day decisions to support the board strategy in all business activities outside of project delivery.



Our Company

Our core services cover all sectors from commercial, residential, retail, mixed use, education and leisure. We are proud to work on prestigious projects throughout the world.

These projects cover a variety of sectors and types, ranging from master plans in excess of 56,000m² in China through to commercial offices in Africa and private residences designed by signature architects in the UAE.

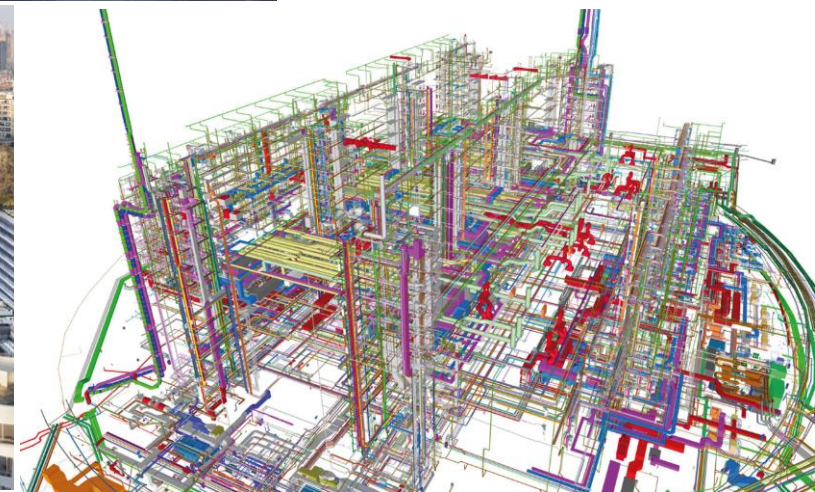
Our commitment to the quality of our professional services delivery applies to all work undertaken, irrespective of size or value.

Our core business is mechanical, electrical and public health (MEP) engineering, also known as building services engineering.

Never satisfied with resting on past successes, our ongoing investment in research and development (R&D) allows us to influence industry trends and continue to produce award-winning projects.

Our environmental specialists are recognised industry wide for their achievements. The group looks into the performance of buildings (micro-scale) and masterplans (macro-scale), fusing the technical aspects of environmental principles with our creative architectural and engineering design approach.

We thrive
on projects that
interest, challenge
and encourage
us to push
boundaries



Our People

Delivering real environmental buildings requires a considerate approach towards economic, social and environmental values from all parties involved, including designers, developers, contractors and occupants.

In our pursuit of excellence, we have established a successful track record in research and development engagement. This varies from design and technology at building scale through to post-occupancy evaluation, as well as in-house software development such as SUNTool & Rapiere.

Our environmental specialists also research innovative renewable energy strategies, including large-scale solar power, building-integrated photovoltaic (BIPV and PVT), on centrated solar power (CSP), waste-to-energy and fuel cell technologies.



Our People



200 staff members
Across 5 offices



15 languages spoken
from French, Spanish, Italian
to Mandarin, Hindi, Arabic



CIBSE APPROVED
Training & Development
Scheme



Average employee age



Employees hail from 18 countries
representing 5 continents



Active industry employees
BCO, CTBUH, Corenet, CIBSE, WES



20 STEM Ambassadors
Science Technology
Engineering Mathematics



15 CSR Partners
Corporate Social Responsibility



15
Average annual intake of
Graduates and apprenticeships

Investing in your future

At chapmanbdsp, you will build your skills and experience to become a professional consultant. You will be given the opportunity to show outstanding technical knowledge, determination and the ability to work as part of a team.

With such breadth of experience behind you, along with a combination of interpersonal skills training and technical training, you will be well on your way to achieving chartered or incorporated status. Our mentoring programme provides a vital link between you and your career aspirations.

We encourage graduates and apprentices to become student members of CIBSE from the outset.

As CIBSE Patron' members, you will have access to a variety of industry led resources, the ability to attend industry events and opportunities to network with likeminded peers.

Work experience is an important way for people considering a career in professional services to gain insight into chapmanbdsp and its various roles.

“We inspire our people to become the experts and leaders of tomorrow.”

PROFESSIONAL
CHARTERSHIP
SUPPORT

EXTERNAL
PLACEMENTS
FOR DIFFERENT
DISCIPLINES,
CULTURE &
BACKGROUND

MONITORING

PERSONAL &
TECHNICAL
DEVELOPMENT
COURSES

NETWORKING,
SHARE LEARNING
& INFORMATION

CONTINUED
PROFESSIONAL
DEVELOPMENT
(CPD)



Internships/Industrial Placements

Imagine the possibilities we can achieve together.

If you're currently at university, spending time on a placement or internship with us will help you get a better understanding of the areas that inspire you the most. You'll be able to develop your technical skills and gain valuable experience to add to your CV.

You'll also be making important contacts in the industry and if you do well and like what we do, you'll be able to fast track through part of the graduate recruitment process. In fact, this would be the ideal starting point for a graduate career with us.

Work Experience

We offer work experience placements for those attending school/college, for 1-2 weeks. This is an opportunity to find out about building services.

"I wanted to express my heartfelt gratitude for the incredible experience I had at ChapmanBDSP. During my time here, I've gained invaluable knowledge in various engineering sectors like mechanical, PH (Public Health), environmental, and electrical. Moreover, I got a fascinating insight into Chapman's operations in the consultancy industry. It has been an amazing journey, and I eagerly look forward to returning when I reach 18, to witness firsthand how your team operates in the field. As an aspiring chemical engineer, this work experience has been immensely valuable in helping me understand the true essence of engineering. Thank you so much for everything!" **Year 12 Student Quote**



Summer Internships

For students who are currently studying at university. Internships are available for all degree years. Our summer internships generally last 4-6 weeks.



Industrial Placements

These are longer placements for students & count towards your university degree. They are typically between 9 and 12 months long.

Opportunities with us

Apprentices

We do not want to just develop competent engineers and environmental consultants; we want to develop some of the most innovative talent in the industry.

Good engineering design skills require a multi-faceted approach, a keen commercial sense, genuine approachability and the personality to lead and communicate with people, in pursuit of effective solutions.

We look for people who will help to enhance and further our reputation for excellence. We seek those who share our passion for creative design and innovative solutions, to deliver engineering success.

Whatever your background, you will need to demonstrate a number of key skills and aptitudes to succeed as part of our team: key skills and aptitudes to succeed as part of our team:

- Excellent problem-solving skills
- Pro-active and 'can do' approach
- Excel in all you do
- Interpersonal & communication skills
- Working with others
- Attention to detail and initiative

You will work on real engineering projects from day one and be developed by line managers and mentors to ensure you are acquiring the technical skills and qualifications you need to start your career.

You will have the opportunity to work with experts in Mechanical, Electrical, Public Health, Lighting and Environmental services.

We offer apprenticeships at Level 4 (higher), and Level 6 (degree). Our apprentices are encouraged to study for a professional qualification in building services, including mechanical, electrical engineering, environmental and digital design consulting.



"We seek those who share our passion for creative design and innovative solutions, to deliver engineering success. Our people are our principle asset, constantly learning and evolving."

Opportunities with us

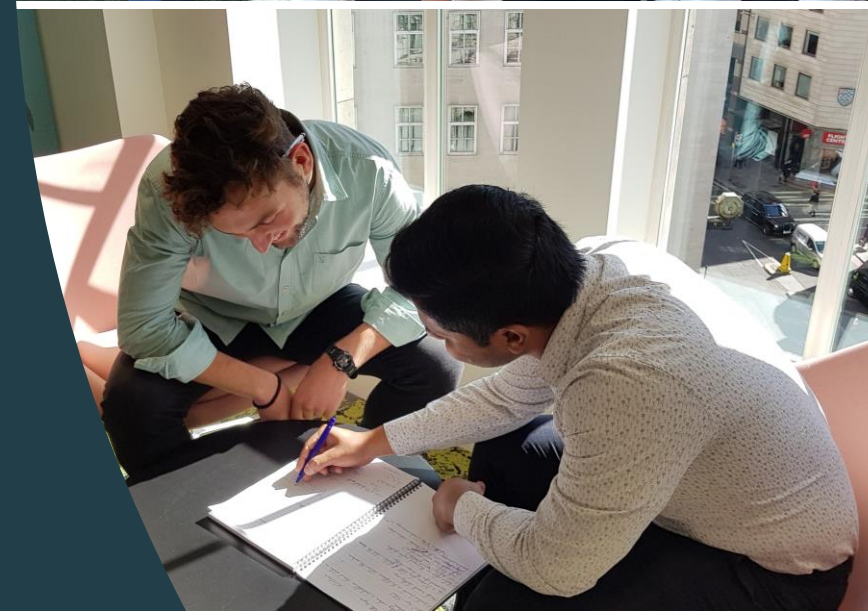
Graduates

You will work on real engineering projects from day one and be developed by line managers and mentors to ensure that you are able to make a contribution as soon as you join us. Supporting team members to deliver a high-level design consultancy client focused service.

You will have the opportunity to work with experts in mechanical, electrical, public health, fire, lighting and environmental services. Your first year with us will be varied, highly demanding but above all fun and rewarding.

Key Responsibilities

- Developing sustainable design solutions for building environments
- Working with signature architects
- Using 3D Models and Building Information Modelling (BIM)
- Undertaking technical studies and writing reports
- Visiting construction and sites and liaising with contractors
- Carrying out visual surveys and investigations
- Excellent verbal and written communication skills
- Team working and collaboration
- Attention to detail and accuracy
- Commercial awareness
- Strong analytical skills
- An understanding and interest in sustainability.
- Knowledge of Revit or 3D modelling software is an advantage but is not essential.



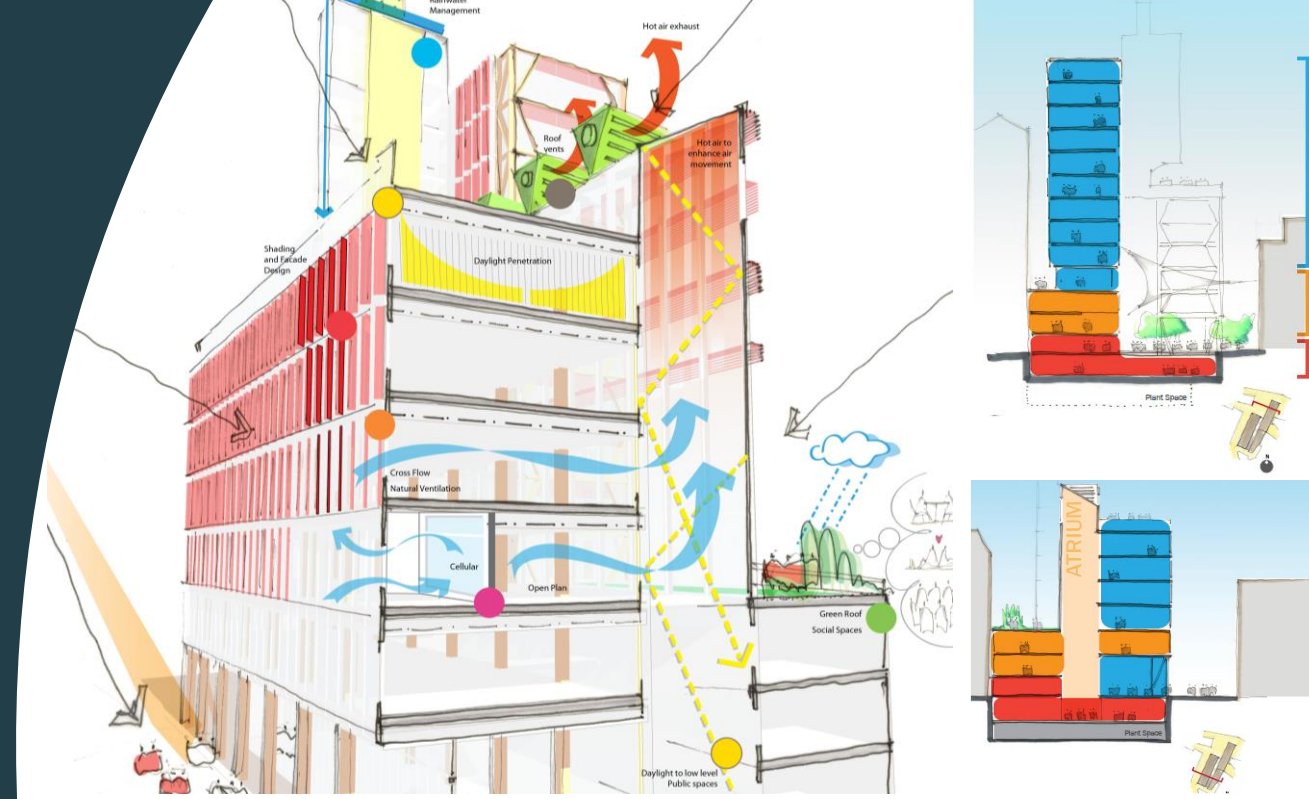
Proud of our projects

“We are proud to have delivered world class projects across a wide range of sectors.”

We employ talented, motivated individuals who are passionate about working on interesting projects.

Those who take pleasure in and care about their work are not only the most productive but are often responsible for the most interesting ideas.

It is this attitude that allows us to create innovative, award-winning projects.



Centre Building

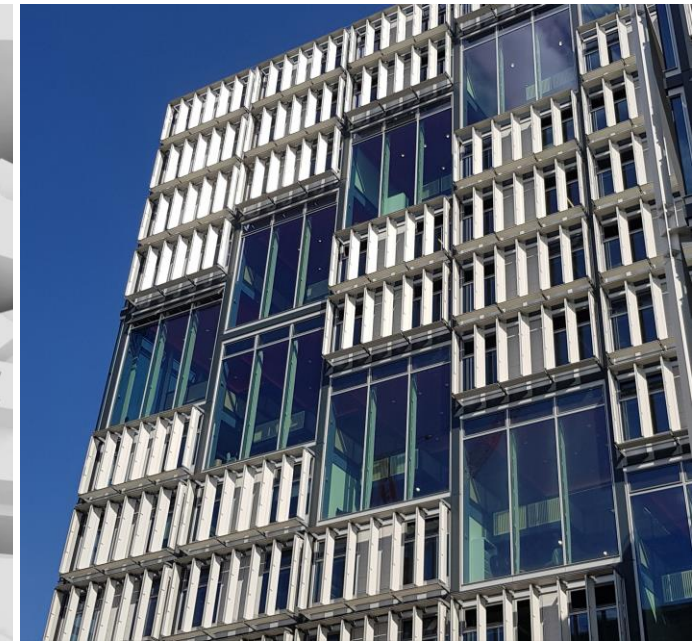
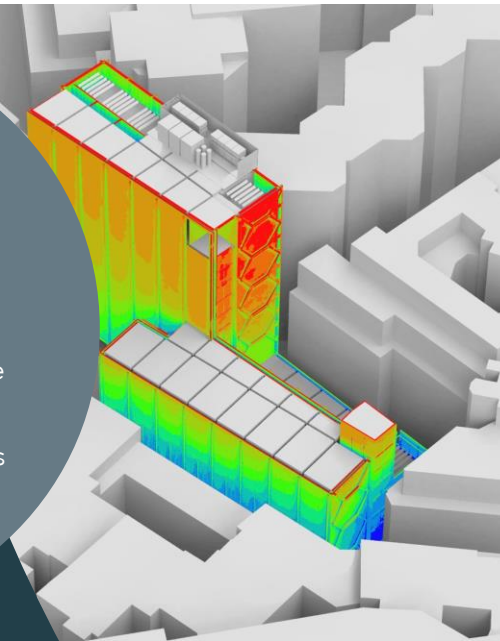
London School of Economics

RIBA London Award 2021

RIBA National Award 2021

BCI Award: Social Infrastructure
Project of the Year 2020

BREEAM Award: Public Projects
/Post Construction Year 2020



A low-angle, upward-looking photograph of the LSE Centre Building, a modern skyscraper with a glass and steel facade. The building's structure is composed of a grid of vertical and horizontal elements, creating a complex geometric pattern. The sky is a clear, bright blue. A large, semi-transparent blue circle is overlaid on the left side of the image, containing the building's name and a list of awards.

LSE Centre Building

- **RIBA London Award 2021**
- **RIBA National Award 2021**
- **2020 BCI Award: Social Infrastructure Project of the Year**
- **2020 BREEAM Award: Public Projects/Post Construction**



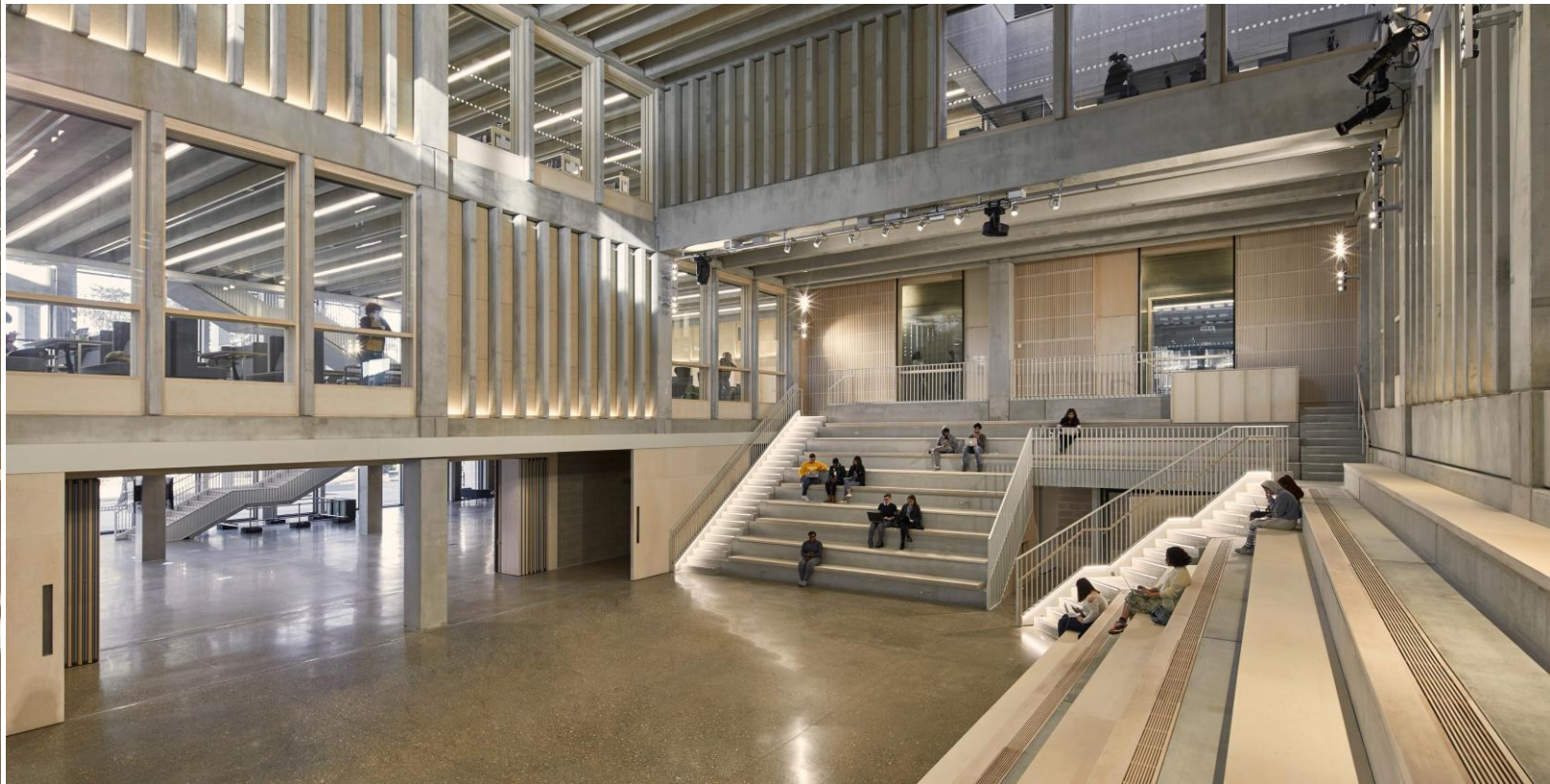
RIBA
Stirling Prize
Winner 2021

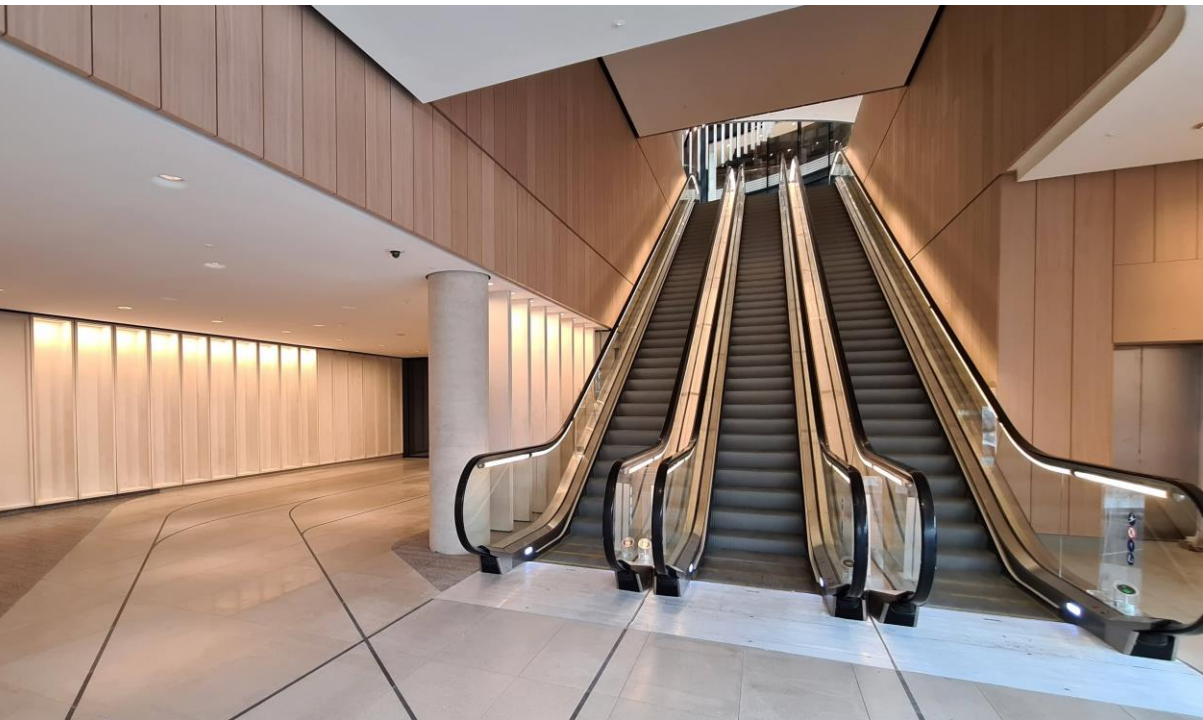
Kingston
University
Town House



RIBA
Stirling Prize
Winner 2021

Kingston
University
Town House





British Land
100 Liverpool St

BREEAM 'Outstanding' 89.2%

"The first British Land building to achieve 'Outstanding', propelling the project into the top 1% of sustainable office buildings in the UK."

2021 City of London:
Building of the Year

**Battersea
Phase 2**



Congratulations

Recent charterships/memberships



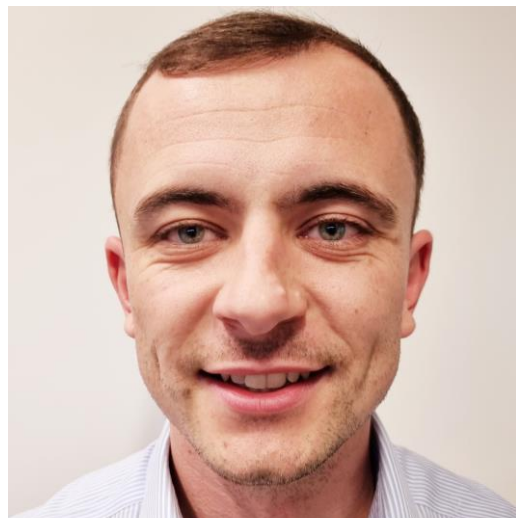
Sorcha Breslin
Licentiate
CIBSE membership



Nitharshan Natarajan
ACIBSE CEng
CIBSE Associate



Leah Lucien
IEC
Associate



Jacob Tanner
ACIBSE IEng
CIBSE Associate



James Day
MCIBSE CEng
CIBSE Chartered Member



Dave Honey
MCIBSE CEng
CIBSE Chartered Member



YOUNG ENGINEERS AWARDS 2021

Employer of the Year

WINNER

enei

TIDE

Bronze Standard
2023

