



---

EARLY CAREERS: **GRADUATES** | APPRENTICES | STUDENTS

# WELCOME

ChapmanBDSP is a successful organisation which has developed due to the efforts and talents of its people. The Company values its staff and wants to encourage them to achieve their ambitions. We are always looking for new people to join our diverse and talented teams and are keen to encourage people into the industry.

We will help and support you in developing your career, ensuring that you have the training and resources that you need to build your knowledge base. You will also be assigned a mentor from within the business to assist you with this and maximize your future potential.

As a Company, operating in a highly competitive skills-driven market, we are always looking to attract and encourage new talent into our business and broaden the reach of our industry.



Kathryn Cox  
HR Director



# WHO WE ARE

We are innovators who challenge technical constraints and conventional engineering design.

ChapmanBDSP is an owner led business specialising in all aspects of Building Services and Environmental Consultancy. We are proud to have delivered world-class projects in more than 30 countries across the globe.

For over 40 years, we have worked with clients across a wide range of markets, from large mixed use developments, through to one-off private residences. We provide truly integrated service delivery through our in-house specialists that span the life-cycle of each project.

The mix of Engineers, Designers, Architects, Programmers, Analysts and Researchers that represent our core staff, enables us to take on a variety of technically challenging projects and explore solutions from a multi-layered perspective.

Our core services cover all sectors from commercial, residential, retail, mixed use, education and leisure. We are proud to work on prestigious projects throughout the world.

These projects cover a variety of sectors and types, ranging from master plans in excess of 56,000m<sup>2</sup> in China through to commercial offices in Africa and private residences designed by signature architects in the UAE.

Our commitment to the quality of our professional services delivery applies to all work undertaken, irrespective of size or value.



Design Museum, London [John P. Johnson Architects]

# WHAT WE DO

**Our core business is mechanical, electrical and public health (MEP) engineering, also known as Building Services Engineering.**

We thrive on projects that interest, challenge and encourage us to push boundaries. Never satisfied with resting on past successes, our ongoing investment in research and development (R&D) allows us to influence industry trends and continue to produce award-winning projects.

Our environmental specialists are recognised industry wide for their achievements. The group looks into the performance of buildings (micro-scale) and masterplans (macro-scale), fusing the technical aspects of environmental principles with our creative architectural and engineering design approach.

Delivering real environmental buildings requires a considerate approach towards economic, social and environmental values from all parties involved, including designers, developers, contractors and occupants.

In our pursuit of excellence, we have established a successful track record in research and development engagement. This varies from design and technology at building scale through to post-occupancy evaluation, as well as in-house software development such as SUNTool & Rapiere.

Our environmental specialists also research innovative renewable energy strategies, including large-scale solar power, building-integrated photovoltaic (BIPV and PVT), concentrated solar power (CSP), waste-to-energy and fuel cell technologies.





One Airport Square, Accra, Ghana (Mario Cucinella Architects)

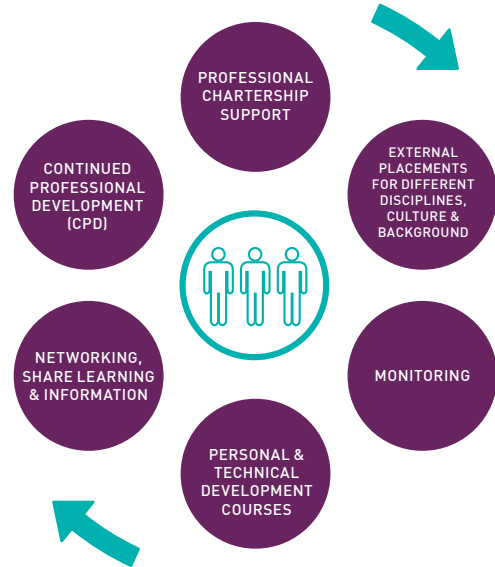
# INVESTING IN YOUR FUTURE

We inspire our people to become the experts and leaders of tomorrow.

At ChapmanBDSP you will build your skills and experience to become a professional consultant. You will be given the opportunity to show outstanding technical knowledge, determination and the ability to work as part of a team.

With such breadth of experience behind you, along with a combination of interpersonal skills training and technical training, you will be well on your way to achieving Chartered or Incorporated status. Our mentoring programme provides a vital link between you and your career aspirations.

We encourage graduates and apprentices to become student members of CIBSE from the outset. As CIBSE Patron's, this gives you access to a variety of industry led resources, the ability to attend industry events and opportunities to network with like minded peers.







London 2012 Olympic Velodrome (Hopkins Architects)

# INTERNSHIPS & PLACEMENTS

Work experience is an important way for people considering a career in professional services to gain insight into ChapmanBDSP and its various roles.

**Internships /Industrial Placements** - If you're currently at university, spending time on a placement or internship with us will help you get a better understanding of the areas that inspire you the most. You'll be able to develop your technical skills and gain valuable experience to add to your CV.

You'll also be making important contacts in the industry and if you do well and like what we do, you'll be able to fast track through part of the graduate recruitment process. In fact, this would be the ideal starting point for a graduate career with us.

**Work Experience** - We offer work experience placements for those attending school/college, for 1-2 weeks. This is an opportunity to find out about building services.

Our paid undergraduate opportunities include:

**Summer Placements** - for students who are currently studying at university. Internships are available for all degree years. Our summer internships generally last 4-6 weeks.

**Industrial Placements** - these are longer placements for students and count towards your university degree. They are typically between 9 and 12 months long.



# APPRENTICESHIPS

**We seek those who share our passion for creative design and innovative solutions, to deliver engineering success.**

We do not want to just develop competent engineers and environmental consultants, we want to develop some of the most innovative talent in the industry.

Good engineering design skills require a multi-faceted approach, a keen commercial sense, genuine approachability and the personality to lead and communicate with people, in pursuit of effective solutions.

We look for people who will help to enhance and further our reputation for excellence. We seek those who share our passion for creative design and innovative solutions, to deliver engineering success.

Whatever your background, you will need to demonstrate a number of key skills and aptitudes to succeed as part of our team:

- Excellent problem solving skills
- Pro-active and 'can do' approach
- Excel in all you do
- Interpersonal & communication skills
- Working with others
- Attention to detail and initiative

You will work on real engineering projects from day one and be developed by line managers and mentors to ensure you are acquiring the technical skills and qualifications you need to start your career. You will have the opportunity to work with experts in Mechanical, Electrical, Public Health, Fire, Lighting and Environmental services.

We offer apprenticeships at Level 2 (intermediate), Level 3 (advanced), Level 4 (higher) and Level 6 (degree). Our apprentices are encouraged to study for a professional qualification in building services, including mechanical, electrical engineering, environmental and digital design consulting.



ME Hotel, London (Foster + Partners Architects)

# GRADUATES

**Our people are our principle asset, constantly learning and evolving.**

You will work on real engineering projects from day one and be developed by line managers and mentors to ensure that you are able to make a contribution as soon as you join us. Supporting team members to deliver a high level design consultancy client focused service.

You will have the opportunity to work with experts in Mechanical, Electrical, Public Health, Fire, Lighting and Environmental Services. Your first year with us will be varied, highly demanding but above all fun and rewarding.

## Key Responsibilities

- Developing sustainable design solutions for building environments
- Working with signature architects
- Using 3D Models and Building Information Modelling (BIM)
- Undertaking technical studies and writing reports
- Visiting construction and sites and liaising with contractors
- Carrying out visual surveys and investigations

## Skills and Experience

- Excellent verbal and written communication skills
- Team working and collaboration
- Attention to detail and accuracy
- Commercial awareness
- Strong analytical skills
- An understanding and interest in sustainability
- Knowledge of Revit or 3D modelling software is an advantage, but is not essential



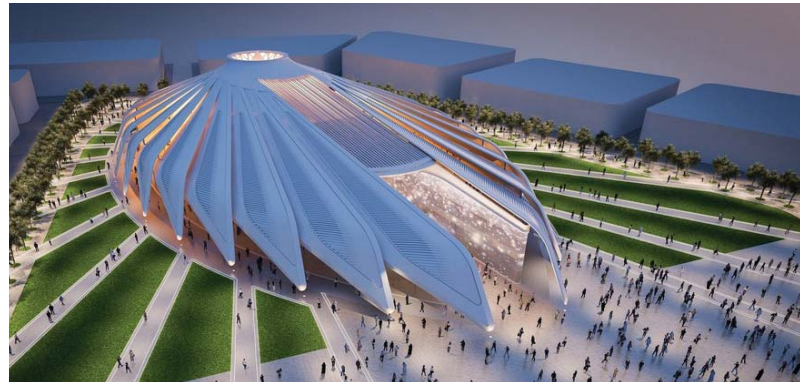


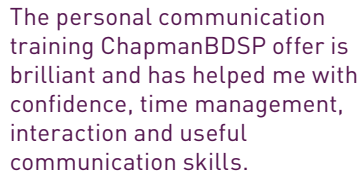
# PROUD OF OUR PROJECTS

We are proud to have delivered world class projects across a wide range of sectors.

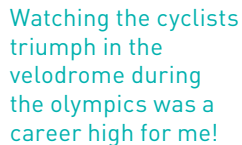


We employ talented, motivated individuals who are passionate about working on interesting projects. Those who take pleasure in and care about their work are not only the most productive, but are often responsible for the most interesting ideas. It is this attitude that allows us to create innovative, award-winning projects.









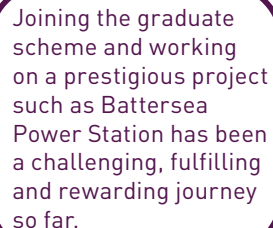
The personal communication training ChapmanBDSP offer is brilliant and has helped me with confidence, time management, interaction and useful communication skills.



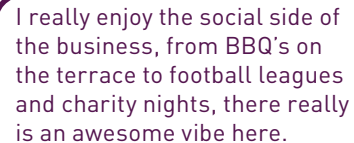


Watching the cyclists triumph in the velodrome during the olympics was a career high for me!



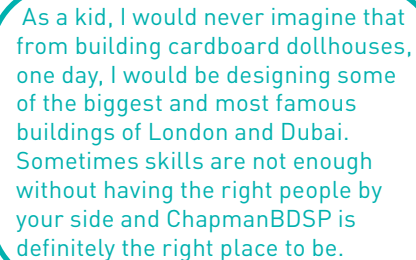
There is a fantastic vibe socially at ChapmanBDSP, with great support from personally assigned mentors and peers, supporting the learning and integrating process.




Joining the graduate scheme and working on a prestigious project such as Battersea Power Station has been a challenging, fulfilling and rewarding journey so far.



I really enjoy the social side of the business, from BBQ's on the terrace to football leagues and charity nights, there really is an awesome vibe here.



As a kid, I would never imagine that from building cardboard dollhouses, one day, I would be designing some of the biggest and most famous buildings of London and Dubai. Sometimes skills are not enough without having the right people by your side and ChapmanBDSP is definitely the right place to be.









**Kathryn Cox, HR Director**

kathryn.cox@chapmanbdsp.com

---

London

Abu Dhabi

Birmingham

Dubai

Kent

Saffron House

6 - 10 Kirby Street

London

EC1N 8TS

UK

T

+44 (0)20 7618 4800

F

+44 (0)20 7618 4801

E

info@chapmanbdsp.com

W

chapmanbdsp.com